



# NOTES

1. WATER SERVICE PROVIDED BY:  
VIRGIN VALLEY WATER DISTRICT  
800 WINDMILL ROAD  
MESQUITE, NEVADA 89027  
(702) 346-5731
2. SEWER SERVICE PROVIDED BY:  
MESQUITE CITY SANITATION DEPARTMENT  
10 E. MESQUITE BOULEVARD  
MESQUITE, NEVADA 89027  
(702) 346-5286
3. ALL PROPOSED STREETS ARE TO BE PUBLIC.
4. 10' MINIMUM HORIZONTAL SEPARATION BETWEEN WATER LINES AND SEWER LINES TO BE MAINTAINED AT ALL TIMES.
5. CONCRETE ENCASE SEWER LINE TO 10' ON BOTH SIDES OF WATER LINE CROSSING PER CC. SANITATION DISTRICT DESIGN STANDARD DRAWING NO. SD-25.
6. GARBAGE DISPOSAL TO MEET CITY OF MESQUITE STANDARDS.

# LEGEND

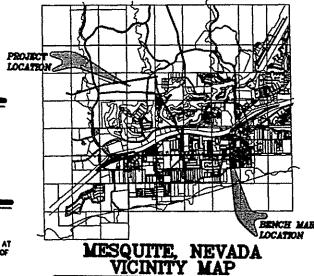
- 1720 --- EXISTING 1" CONTOUR WITH ELEVATION SHOWN
- 15 --- EXISTING 2" CONTOUR
- 10 --- NEW 8" PVC SEWER LINE WITH SIZE SHOWN
- 10 --- NEW 8" PVC WATER LINE WITH SIZE SHOWN
- 10 --- RIGHT OF WAY LINE
- 10 --- PROPERTY LINE
- 10 --- PROPOSED ASPHALT
- 10 --- PROPOSED CONCRETE
- 10 --- NEW BRICK
- 10 --- NEW SIDE WALK
- 10 --- NEW FIRE FRONT
- 10 --- NEW STREETCART

# LEGAL DESCRIPTION

A PORTION OF PARCELS 1, AS RECORDED IN FILE 107, PAGE 4 OF PARCEL MAPS IN THE OFFICIAL RECORDS OF CLARK COUNTY, NEVADA.  
CONTAINS 13.89 ACRES

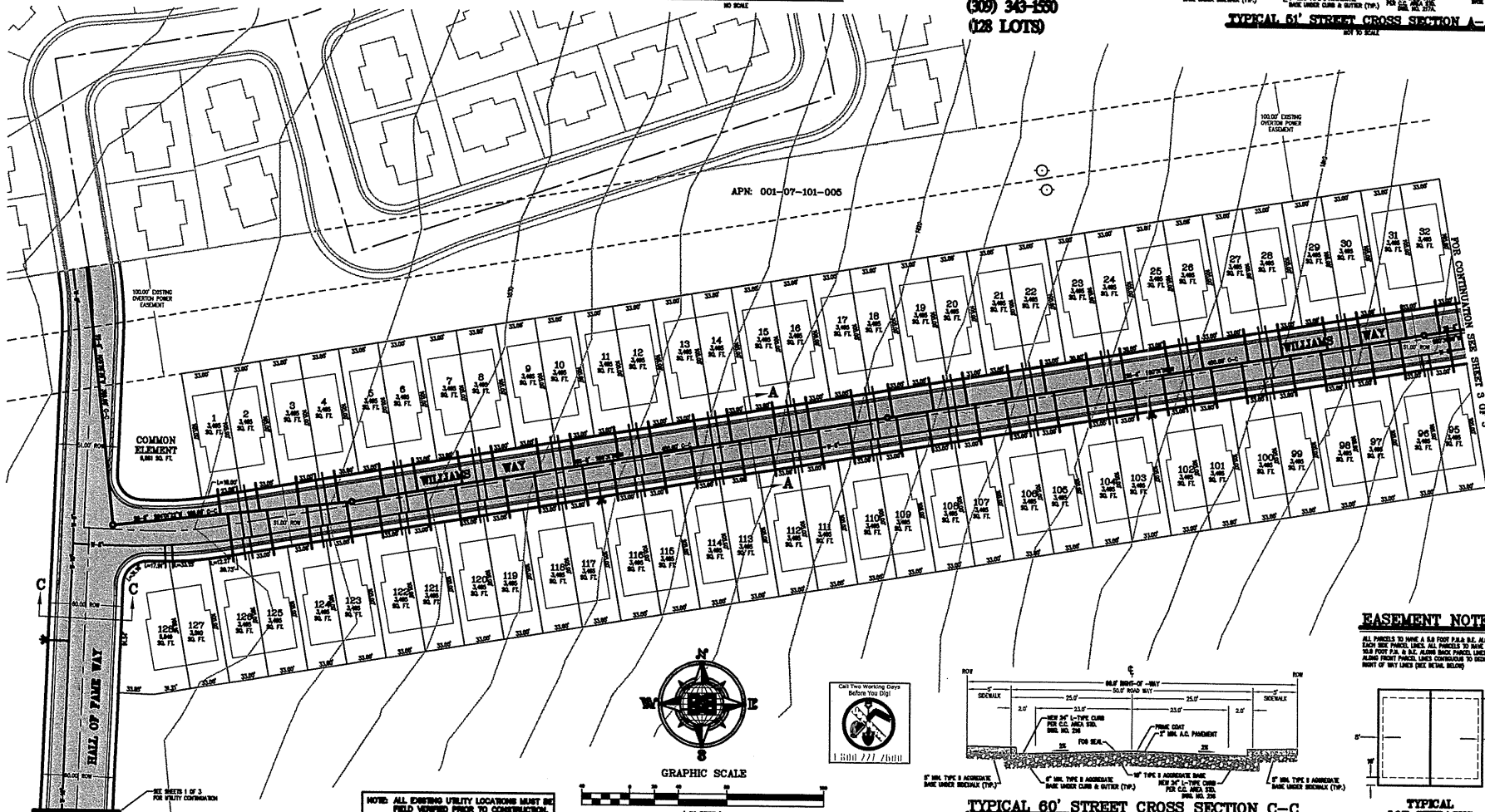
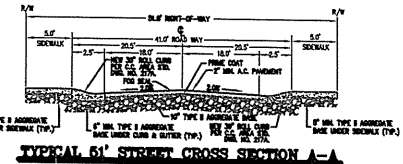
# BENCH MARK

N.E.S. MONUMENT 2-405  
ELEVATION DURING MONO 1929  
ELEV. 1096.40  
TOP OF STAINLESS STEEL ROD IN CAVING SET BELOW GROUND AT SOUTHEAST CORNER OF LIME CHURCH PROPERTY, NORTH SIDE OF MESQUITE BOULEVARD, WEST SIDE OF TOWN SQUARE.



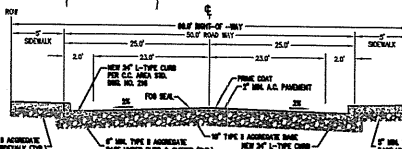
# TENTATIVE MAP OF HITTERS SUBDIVISION

APN 001-07-201-004  
FOR  
RFMS  
115 E. SOUTH ST.  
GALESBURG, ILLINOIS 62401  
(309) 343-1550  
(128 LOTS)



# EASEMENT NOTES

ALL PARCELS TO HAVE A 6.6 FOOT P.A.S. ALONG EACH SIDE PARCEL LINE. ALL PARCELS TO HAVE A 10.0 FOOT P.A.S. & 6.6 ALONG BACK PARCEL LINES AND ALONG FRONT PARCEL LINES CONFORMANCE TO REDUCED RIGHT OF WAY LINES (SEE RETAIN. BELOW)

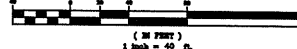


# TYPICAL LOT SETBACKS

NO SCALE



# GRAPHIC SCALE



NOTES: ALL EXISTING UTILITY LOCATIONS MUST BE FIELD VERIFIED PRIOR TO CONSTRUCTION.

NO.	DESCRIPTION	DATE	BY	APPROVED

**BULLOCH BROTHERS  
ENGINEERING INC.**  
CIVIL ENGINEERING AND SURVEYING-LAND PLANNING  
1111 N. 10TH STREET, SUITE 100  
LAS VEGAS, NEVADA 89104  
(702) 735-1111  
FAX (702) 735-1112  
WWW.BULLOCHBROTHERS.COM

TENTATIVE MAP  
HITTERS SUBDIVISION SHEET 1  
FOR  
RFMS PUD  
MESQUITE, NEVADA  
CLARK COUNTY, NEVADA

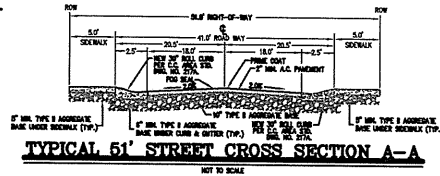
PROJECT NO.	DATE	DESIGNED BY	DRAWN BY	CHECKED BY	TITLE
2007-04-15	2/28/2007	DAVE C	DAVE C	DAVE C	2 OF 3

# TENTATIVE MAP OF HITTERS SUBDIVISION

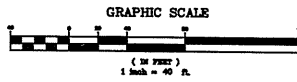
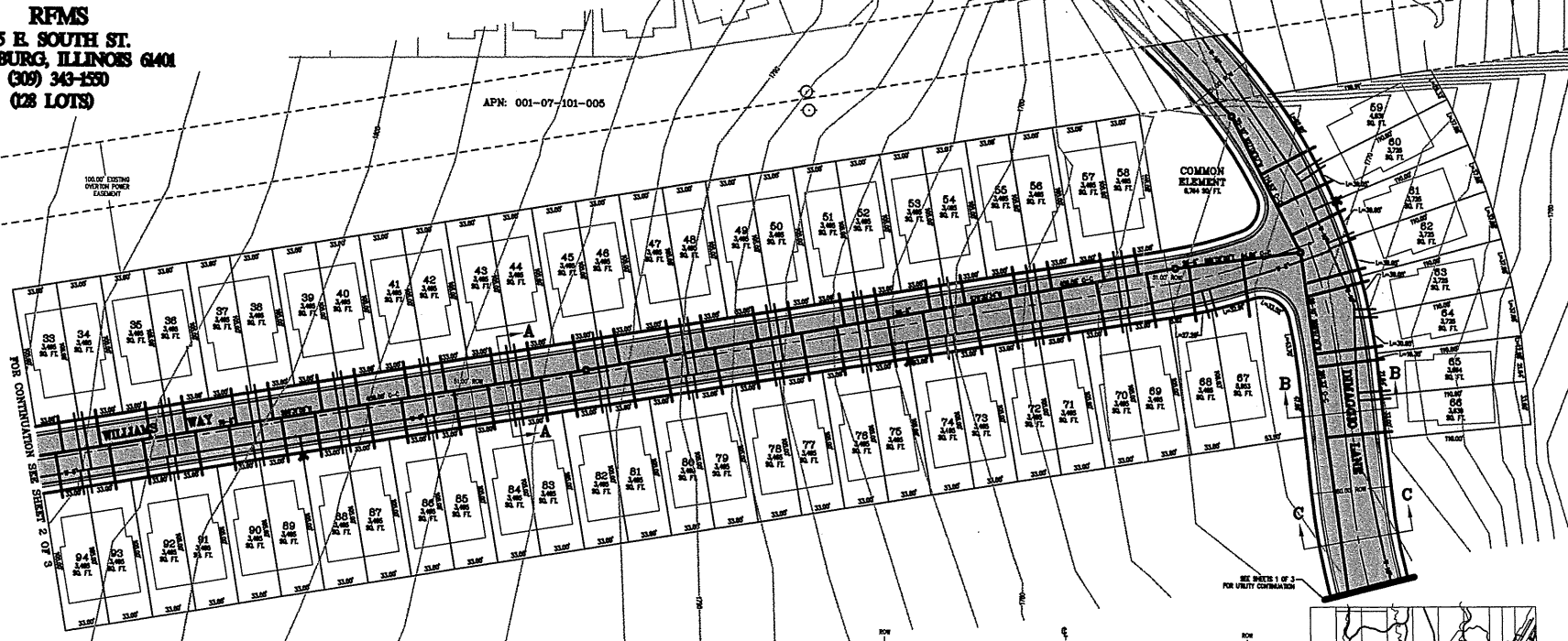
APN 001-07-201-004

FOR  
RFMS

15 E. SOUTH ST.  
GALESBURG, ILLINOIS 61401  
(309) 343-1550  
(28 LOTS)



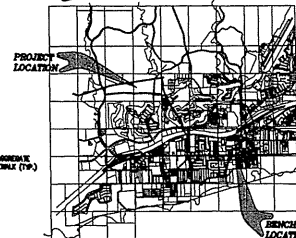
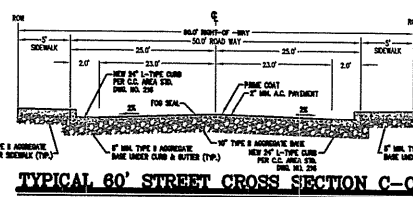
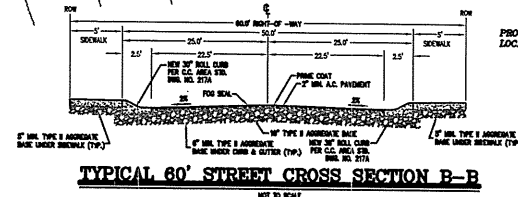
APN: 001-07-101-005



## LEGAL DESCRIPTION

A PORTION OF PARCEL 1, AS RECORDED IN FILE 107, PAGE 4 OF PLAT MAPS IN THE OFFICIAL RECORDS OF CLATSOP COUNTY, NEVADA, CONTAINS 13.88 ACRES

NOTE: ALL EXISTING UTILITY LOCATIONS MUST BE FIELD VERIFIED PRIOR TO CONSTRUCTION.



## BENCH MARK

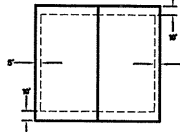
N.E.S. MONUMENT 2-405  
ELEVATION DATUM: NAVD 1983  
TOP OF STAINLESS STEEL ROD IN CEMENT SET BELOW GROUND AT  
SOUTHEAST CORNER OF LOT 285 CHURCH PROPERTY, NORTH SIDE OF  
MESQUITE BOULEVARD, WEST SIDE OF TOWN WASH.

## NOTES

1. WATER SERVICE PROVIDED BY:  
MIDVALLEY WATER DISTRICT  
5500 INDEPENDENCE ROAD  
MESQUITE, NEVADA 89027  
(702) 346-0721
2. SEWER SERVICE PROVIDED BY:  
MESQUITE CITY SANITATION DEPARTMENT  
10 E. MESQUITE BOULEVARD  
MESQUITE, NEVADA 89027  
(702) 346-8286
3. ALL PROPOSED STREETS ARE TO BE PUBLIC.
4. 10' MINIMUM HORIZONTAL SEPARATION BETWEEN WATER LINES AND SEWER LINES TO BE MAINTAINED AT ALL TIMES.
5. CONCRETE EROSION BARRIER LINES TO 15' ON BOTH SIDES OF WATER LINE CROSSING FOR E.C. SANITATION DISTRICT DESIGN STANDARD DRAWING NO. SD-25.
6. GARBAGE DISPOSAL TO MEET CITY OF MESQUITE STANDARDS.

## EASEMENT NOTES

ALL PARCELS TO HAVE A 5.0 FOOT P.U.A. E.A. ALONG EACH SIDE PARCEL LINES. ALL PARCELS TO HAVE A 10.0 FOOT P.U.A. E.A. ALONG BACK PARCEL LINES AND ALONG FRONT PARCEL LINES OUTSTANDING TO ADJACENT RIGHT OF WAY LINES (SEE REG. 50.00).



## LEGEND

- - - - - EXISTING LOT BOUNDARIES WITH ELEVATION SHOWN
- - - - - EXISTING LOT CORNERS
- - - - - NEW 1/4" P.U.A. BARRIER LINES WITH SIDE SHOWN
- - - - - NEW 1/4" P.U.A. BARRIER LINES WITH SIDE SHOWN
- - - - - RIGHT OF WAY LINE
- - - - - PROPERTY LINE
- - - - - PROPOSED ASPHALT
- - - - - PROPOSED CONCRETE
- - - - - NEW ASPHALT
- - - - - NEW DRAINAGE
- - - - - NEW FIRE HYDRANT
- - - - - NEW STREETLIGHT



NO.	DESCRIPTION	DATE	BY	APPROVED

**BULLOCH BROTHERS  
ENGINEERING INC.**  
CIVIL ENGINEER-LAND SUBDIVISION PLANNERS  
1000 W. 10TH STREET, SUITE 100  
LAS VEGAS, NV 89102  
(702) 735-1100



TENTATIVE MAP  
HITTERS SUBDIVISION SHEET 2  
FOR  
RFMS PUD  
MESQUITE, NEVADA  
CLATSOP COUNTY, NEVADA

PROJECT NO.	SCALE	TITLE	DATE	BY	CHKD	APP'D
1288-04-15	1" = 40'	TENTATIVE MAP	2/28/2007	Dave		