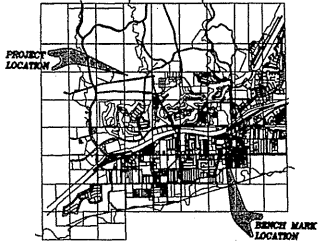
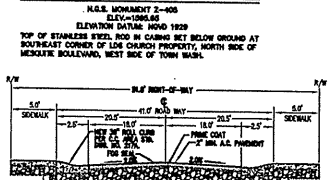


TENTATIVE MAP OF BATSMEN SUBDIVISION APN 001-07-101-006 FOR RFMS 115 E SOUTH ST. GALESBURG, ILLINOIS 6401 (309) 343-4550 (28 LOTS)



MESQUITE, NEVADA
VICINITY MAP

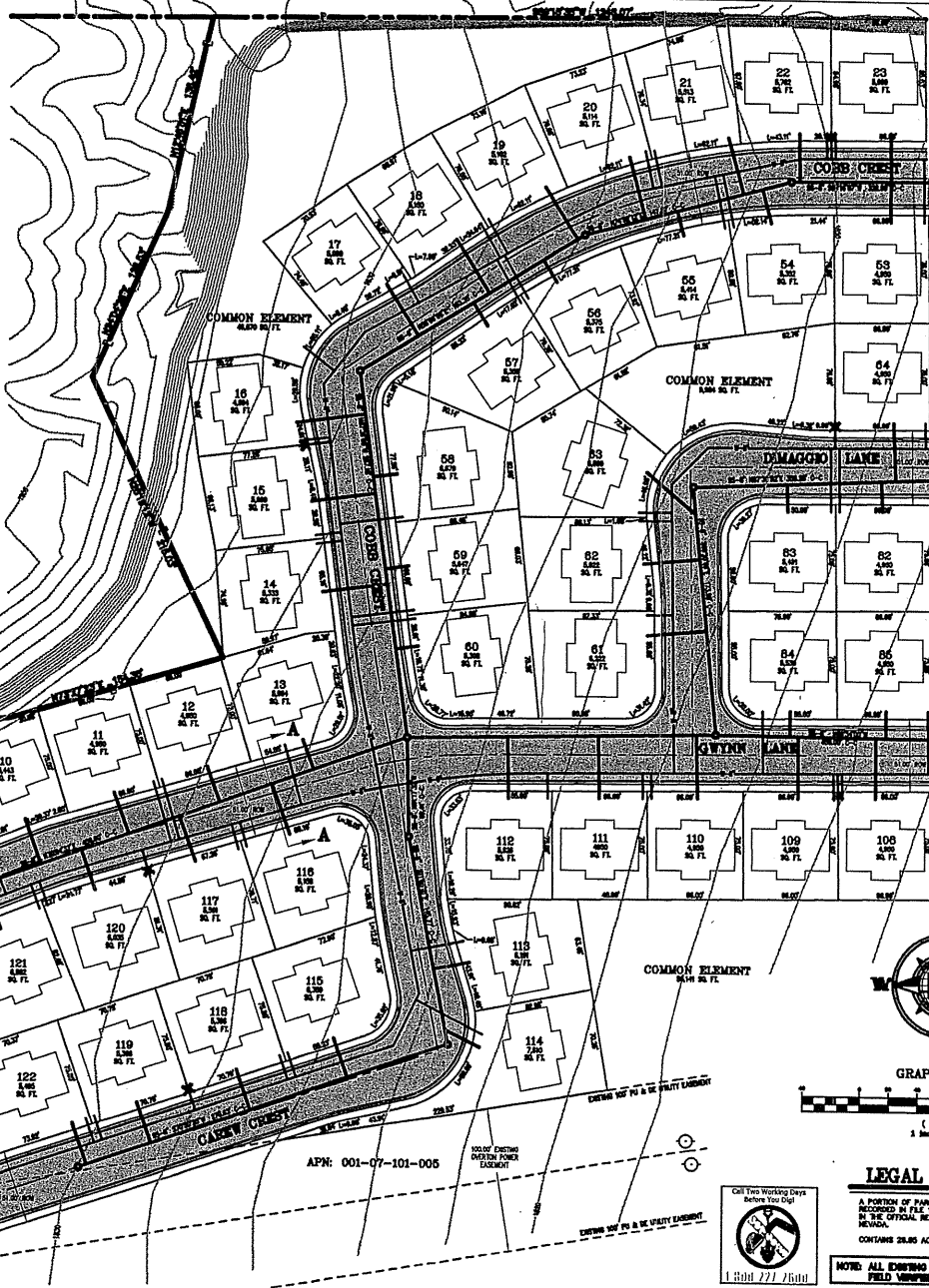
BENCH MARK



TYPICAL 51' STREET CROSS SECTION A-A
NOT TO SCALE

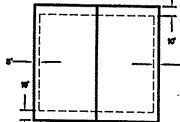
LEGEND

- EASING OF CONTROLS WITH ELEVATION SHOWN
- EASING OF CONTROLS
- NEW 1" PVC SEWER LINE WITH RISE SHOWN
- NEW 1" PVC WATER LINE WITH RISE SHOWN
- BOUNDARY OF NEW LANE
- PROPERTY LINE
- PROPOSED ASPHALT
- PROPOSED CONCRETE
- NEW MANHOLE
- NEW BACK VALVE
- NEW FIRE HYDRANT
- NEW STREETLIGHT



EASEMENT NOTES

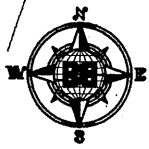
ALL PARCELS TO HAVE A 5' EASEMENT FOR UTILITY LINES TO BE MAINTAINED BY THE CITY OF MESQUITE, NEVADA. ALL UTILITIES TO BE MAINTAINED BY THE CITY OF MESQUITE, NEVADA. ALL UTILITIES TO BE MAINTAINED BY THE CITY OF MESQUITE, NEVADA.



TYPICAL LOT STRIPBACK
NOT TO SCALE

NOTES

1. WATER SERVICE PROVIDED BY: VALLEY WATER DISTRICT, 200 PROSPECT ROAD, MESQUITE, NEVADA 89027, (702) 346-5271
2. SEWER SERVICE PROVIDED BY: MESQUITE CITY SANITATION DEPARTMENT, 10 E. MESQUITE BOULEVARD, MESQUITE, NEVADA 89027, (702) 346-5255
3. ALL PROPOSED STREETS ARE TO BE PUBLIC.
4. 12" MINIMUM HORIZONTAL SEPARATION BETWEEN WATER LINES AND SEWER LINES TO BE MAINTAINED AT ALL TIMES.
5. CONCRETE ENGINE SEWER LINE TO 10' ON BOTH SIDES OF WATER LINE CROSSING FOR C.C. SANITATION DISTRICT DESIGN STANDARD DRAWING NO. SD-20.
6. GARBAGE DISPOSAL TO MEET CITY OF MESQUITE STANDARDS.



GRAPHIC SCALE
1 inch = 40 feet

LEGAL DESCRIPTION

A PORTION OF PARCELS 1 AND PARCEL 2, AS RECORDED IN FILE #111, PAGE 38 OF PARCEL MAPS IN THE OFFICIAL RECORDS OF CLARK COUNTY, NEVADA.

CONTAINS 28.85 ACRES
NOTE: ALL EXISTING UTILITY LOCATIONS MUST BE FIELD VERIFIED PRIOR TO CONSTRUCTION.

NO.	DESCRIPTION	DATE	BY	APPROVED

BULLOCH BROTHERS INC.
ENGINEERING INC.
CIVIL ENGINEER-LAND SURVEYOR-LAND PLANNERS
www.bullochbrothers.com

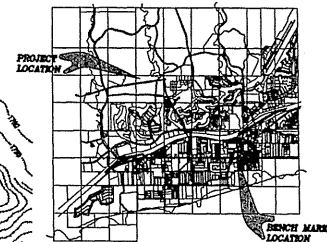


TENTATIVE MAP
BATSMAN SUBDIVISION SHEET 1
FOR
RFMS 1
MESQUITE, NEVADA

NO.	DATE	BY	APPROVED

TENTATIVE MAP OF BATSMEN SUBDIVISION

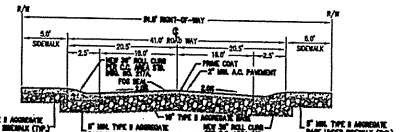
APN 001-07-101-006
FOR
RFMS
115 E. SOUTH ST.
GALESBURG, ILLINOIS 61401
(107) 343-1550
(28 LOTS)



MESQUITE, NEVADA
VICINITY MAP

BENCH MARK

N.S.S. MONUMENT 2-100
ELEVATION 7584.65
ELEVATION DATUM: NAVD 1929
TOP OF STEEL REINFORCED CONCRETE FOUNDATION AT
SOUTHWEST CORNER OF 1/2 ACRE PROPERTY, NORTH SIDE OF
MESQUITE BOULEVARD, WEST SIDE OF JOHN WASH.

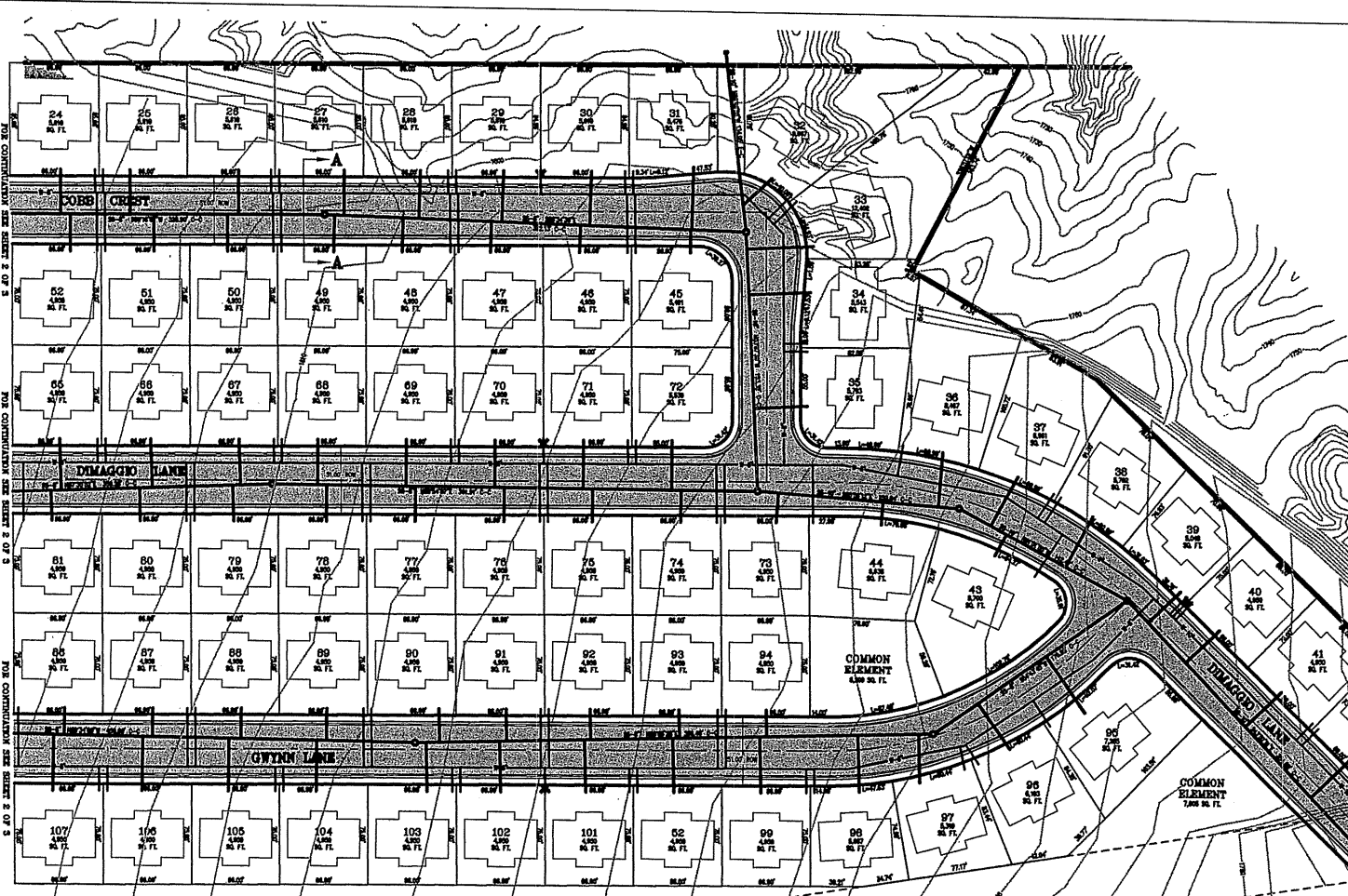


TYPICAL 51' STREET CROSS SECTION A-A

LEGAL DESCRIPTION

A PORTION OF PARCEL 1 AND PARCEL 2 AS
RECORDED IN FILE #11, PAGE 26 OF PARCEL MAPS
IN THE OFFICIAL RECORDS OF CLARK COUNTY,
NEVADA
CONTAINS 26.86 ACRES

NOTE: ALL EXISTING UTILITY LOCATIONS MUST BE
FIELD VERIFIED PRIOR TO CONSTRUCTION.



APN: 001-07-101-005

LEGEND

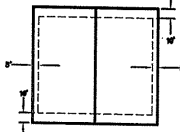
- 120 --- EXISTING CONTIGUOUS WITH ELEVATION SHOWN
- EXISTING ST. CONTIGUOUS
- NEW 12" PVC SEWER LINE WITH SIDE DRAIN
- NEW 12" PVC WATER LINE WITH SIDE DRAIN
- BOUNDARY OF WAY LINE
- PROPERTY LINE
- PROPOSED ASPHALT
- PROPOSED CONCRETE
- NEW MANHOLE
- NEW DATE VALE
- NEW FIRE HYDRANT
- NEW ERECTION

NOTES

1. WATER SERVICE PROVIDED BY:
WYOMING VALLEY WATER DISTRICT
800 RIVERSIDE ROAD
MESQUITE, NEVADA 89027
(702) 346-3778
2. SEWER SERVICE PROVIDED BY:
MESQUITE CITY SANITATION DEPARTMENT
11 E. MESQUITE BOULEVARD
MESQUITE, NEVADA 89027
(702) 346-3285
3. ALL PROPOSED STREETS ARE TO BE
PUBLIC.
4. 12" MINIMUM HORIZONTAL SEPARATION
BETWEEN WATER LINES AND SEWER
LINES TO BE MAINTAINED AT ALL TIMES.
5. CONCRETE ENGINE SEWER LINE TO 12"
ON BOTH SIDES OF WATER LINE CROSSING
PER C.E. SANITATION DISTRICT DESIGN
STANDARD DRAWING NO. SD-30.
6. GARAGE DEPARTMENT TO MEET CITY OF
MESQUITE STANDARDS.

EASEMENT NOTES

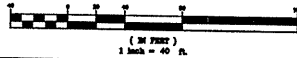
ALL PARCELS TO HAVE A 5'00" FOOT PLAZA W/ 2' ALONG
EACH SIDE PROPERTY LINE. ALL PARCELS TO HAVE A
5'00" FOOT PLAZA W/ 2' ALONG EACH SIDE PROPERTY LINE AND
ALONG FRONT PROPERTY LINES CONTIGUOUS TO PROTECTED
RIGHT OF WAY LINES (SEE DETAIL SHEET).



TYPICAL LOT SETBACKS



GRAPHIC SCALE



NO.	DESCRIPTION	DATE	BY	APPROVED

BULLOCH BROTHERS INC.
ENGINEERING INC.
CIVIL ENGINEERS - LAND SURVEYORS - LAND PLANNERS
1000 S. UNIVERSITY BLVD., SUITE 1000, LAS VEGAS, NV 89102
TEL: (702) 735-1100 FAX: (702) 735-1101
WWW.BULLOCHBROTHERS.COM

TENTATIVE MAP
BATSMEN SUBDIVISION SHEET 2
FOR
RFMS 1
MESQUITE, NEVADA
CLARK COUNTY, NEVADA

DATE	BY	DATE	BY